



Unnamed House Middleton Tyas, Richmond, North Yorks, DL10  
6RE

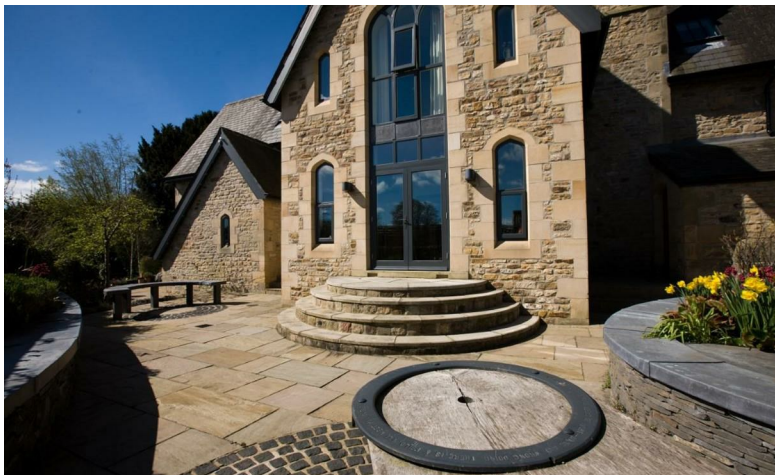


A SUPREMELY BEAUTIFUL & EXTRAORDINARILY 'ECLECTIC FANTASTIC' Home - Superb 9.88m x 6.11m max/32'4" x 20'0" central Living Space & Kitchen, 4 Reception Areas, 3 double En Suite Bedrooms (8.55m x 4.33m/28'0" x 14'2" Master Suite), Exquisite Gardens, double Garage (Potential large OFFICE above) & Parking.

A remarkable converted Victorian school gilded by esteemed local artisan craftspeople (much of the cabinetry is by Anthony Nixon Bespoke Furniture of Barnard Castle). "Almost everything in this house demands to be touched, stroked, or gazed at. Everything has a story to tell and your eyes dart about the place stopping at delicious details at every turn...": Luxe Magazine. "...Please can you pass this on to the owners, it didn't disappoint, it's quite frankly the most amazing house we have ever seen! The interior is exquisite! The owners have the most impeccable taste! Whoever gets to live here are very lucky people. Thank you Michelle B".

Highly rated Middleton Tyas C of E Primary School, a good dining-pub, a village shop (also an 'M&S') & country walks etc. Excellent access to the A1(M) & A66 at Scotch Corner, historic Richmond under 5 miles, DARLINGTON about 9 miles - mainline to LONDON Kings Cross 2 hours 20 minutes, Barnard Castle (co-educational independent day & boarding school) 14 miles & Newcastle 43. The forthcoming DESIGNER OUTLET VILLAGE at Scotch Corner will be the leading shopping & leisure destination in the North of England, bringing an appealing mix of 92 premium & best-of-high-street shops (including 10 restaurants and cafés & 1,300 parking spaces) to one of the UK's most well-known locations.

**Asking price £700,000**



## **PORCH**

### **HALL 6.05m x 2.44m (19'10" x 8'0")**

There are multi-purpose rooms off the Hall, each with their own character: Reading Room, Snug, Sunroom etc & ...

### **Book-lined WASHROOM**

### **INNER HALL**

A life-sized wire figure sculpture embraces an alluring curved wall ushering you into the central Living Space. A 'floating' glass & wood staircase leads up to a tranquil vaulted Mezzanine Area & the first floor accommodation.

### **OFFICE/BEDROOM 4 etc 4.78m x 3.05m (15'8" x 10'0")**

### **BEDROOM 3 & EN SUITE 4.78m x 4.73m (15'8" x 15'6")**

Built-in handmade wardrobes & EN SUITE with Italian vanity ware & Bisazza tiles.

### **SITTING ROOM 5.51m x 3.41m (18'0" x 11'2")**

### **KITCHEN & DINING AREA 9.88m x 6.11m max (32'4" x 20'0" max)**

Handmade Oak & Macassar Ebony Kitchen & Utility units interspersed with panels of vintage printers' blocks fronts & central Oak & Granite island with integrated Falcon wine fridge. Aubergine 3-oven Aga, Wolf hob, integrated dishwasher & American style fridge-freezer: Miele washing machine & tumble drier.

### **UTILITY 3.88m x 1.85m (12'8" x 6'0")**

### **First Floor LANDING AREA**

### **MEZZANINE AREA 4.32m x 4.08m min (14'2" x 13'4" min)**

Bespoke smoked Oak fittings & Whitby-based window

artist Alan Davis has created a striking stained glass focal point for this space – he's created another too.

### **Vaulted READING ROOM 5.61m x 3.68m (18'4" x 12'0")**

### **BEDROOM 1, EN SUITE & DRESSING ROOM 8.55m x 4.33m (28'0" x 14'2")**

Built-in handmade wardrobes & EN SUITE with Italian vanity ware (Rapsel bath & Bisazza tiles) bespoke in-set Zebrano wood vanity area & a large wet shower area with black glass tiles.

### **BEDROOM 2 & EN SUITE 5.49m x 3.26m (18'0" x 10'8")**

Unusual curved glass & Oak staircase - fine views.

### **OUTSIDE**

Blacksmith Adrian Wood's amazing commissioned gates & railings open into gravelled forecourt Parking leading to:

### **Double GARAGE 5.85m x 5.80m (19'2" x 19'0")**

Plus LOFT (5.65m x 5.30m max/18'6" x 17'4" max) - potential OFFICE etc space.

### **GARDENS & PATIO**

The professionally landscaped & manageable Garden area & private Patio are ideal for al fresco summer days, with espaliered apple trees, beautiful Westmorland slate walls & bespoke outdoor table. There are 2 useful outside STORES.

### **...MORE**

Burlington slate roof, hardwood windows & barge boards, handmade solid Oak external & internal doors, Bose sound system, Gas central heating & Double Glazing.

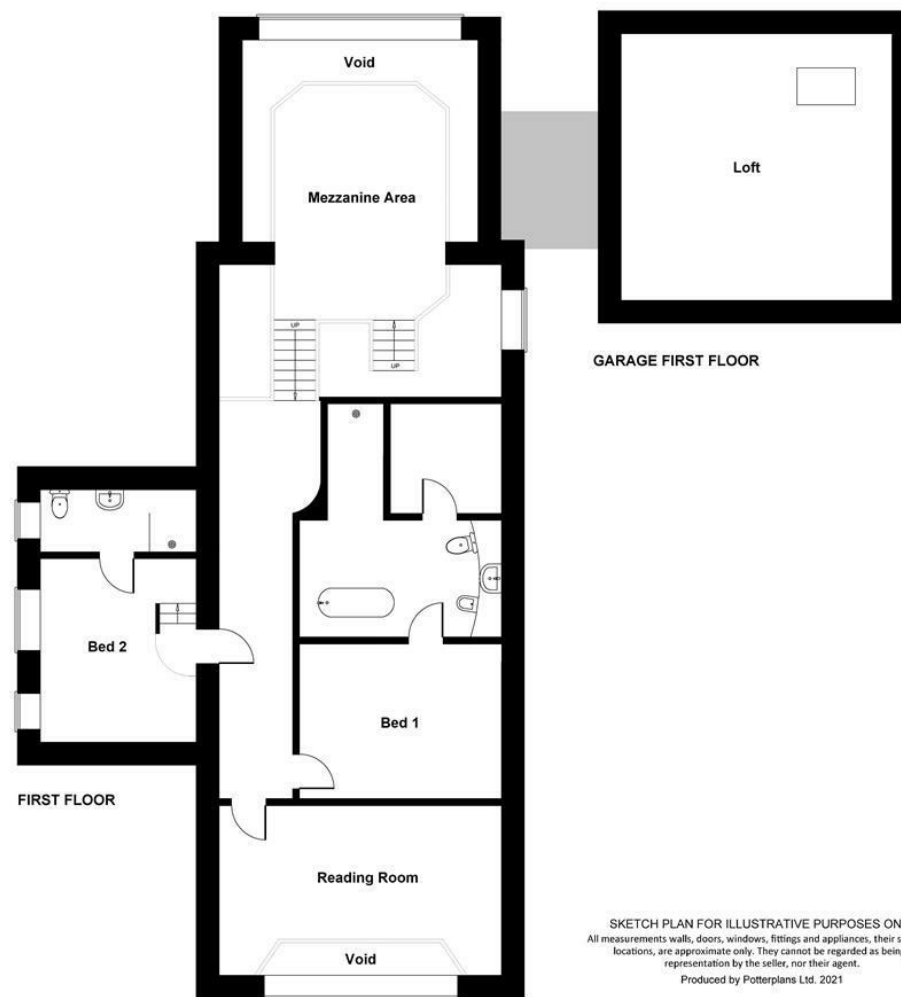
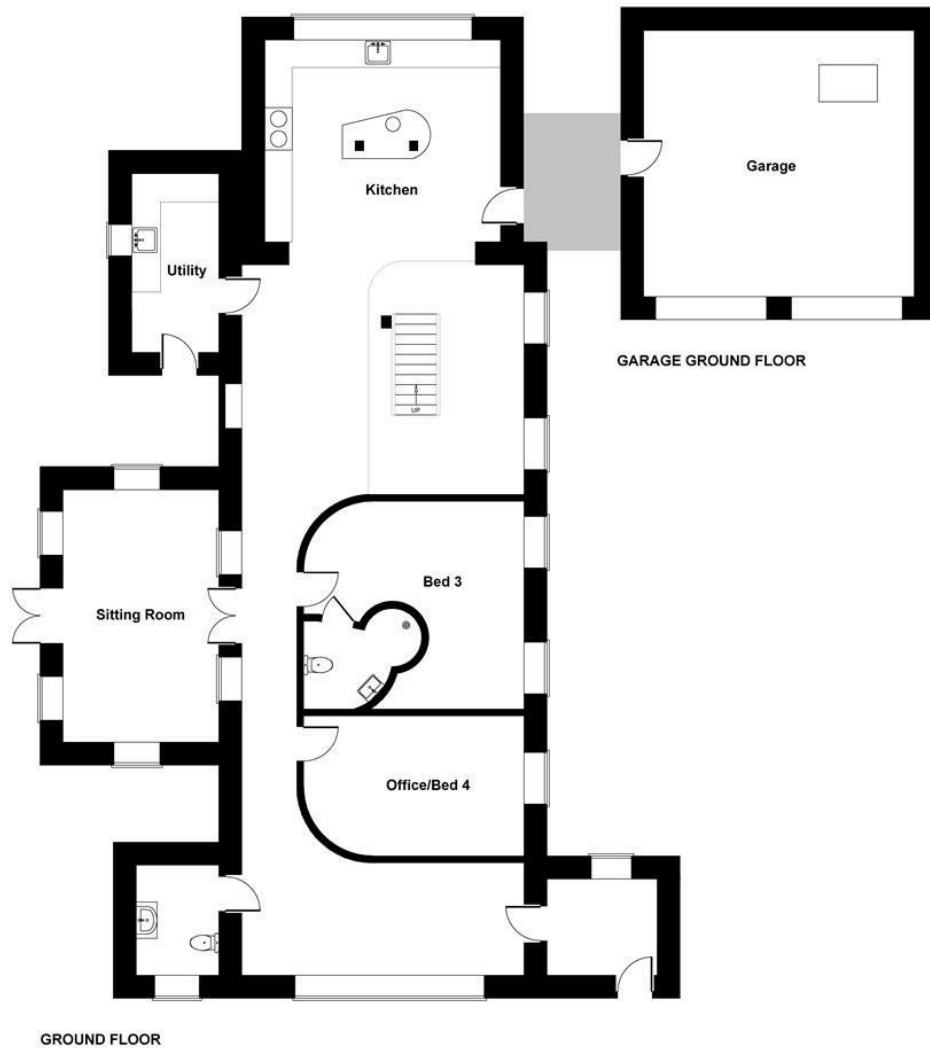












SKETCH PLAN FOR ILLUSTRATIVE PURPOSES ONLY  
 All measurements walls, doors, windows, fittings and appliances, their sizes and locations, are approximate only. They cannot be regarded as being a representation by the seller, nor their agent.  
 Produced by Potterplans Ltd. 2021

